



jordan fishwick

DIDSBURY
Old Lansdowne Road



Old Lansdowne Road, Didsbury, M20 2NZ **Offers Over £250,000**

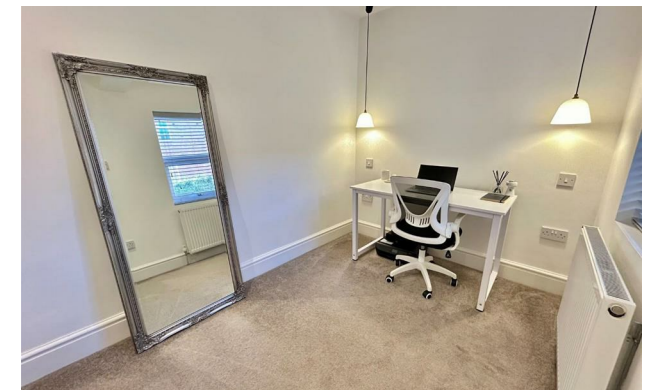


The Property

A stylish, two double bedroom, duplex apartment occupying the ground and lower ground floor of this recently converted attractive Victorian property in the heart of West Didsbury, close to the Metrolink and Burton Road with it's array of cafes, restaurants, & independent shops. Presented to a high standard throughout and boasting both gas central heating and double glazing, the living space in outline comprises: - Private entrance and generous hallway, master bedroom with ensuite shower room and French doors leading to private decked sitting area with South-Easterly aspect with access to communal garden, additional double bedroom and shower room. Staircase giving access to open plan living /dining kitchen fitted with integrated appliances and under floor heating, full height window extending to the entrance hallway above, internal viewing essential to fully appreciate the condition of this beautiful apartment.

Directions

M20 2NZ



- Two double bedrooms
- Duplex apartment
- Master bedroom with ensuite shower room
- Open plan living area with under floor heating
- Direct access to communal gardens
- Presented to the highest standard throughout
- Prime West Didsbury location
- Private entrance
- Private balcony with South-Easterly aspect

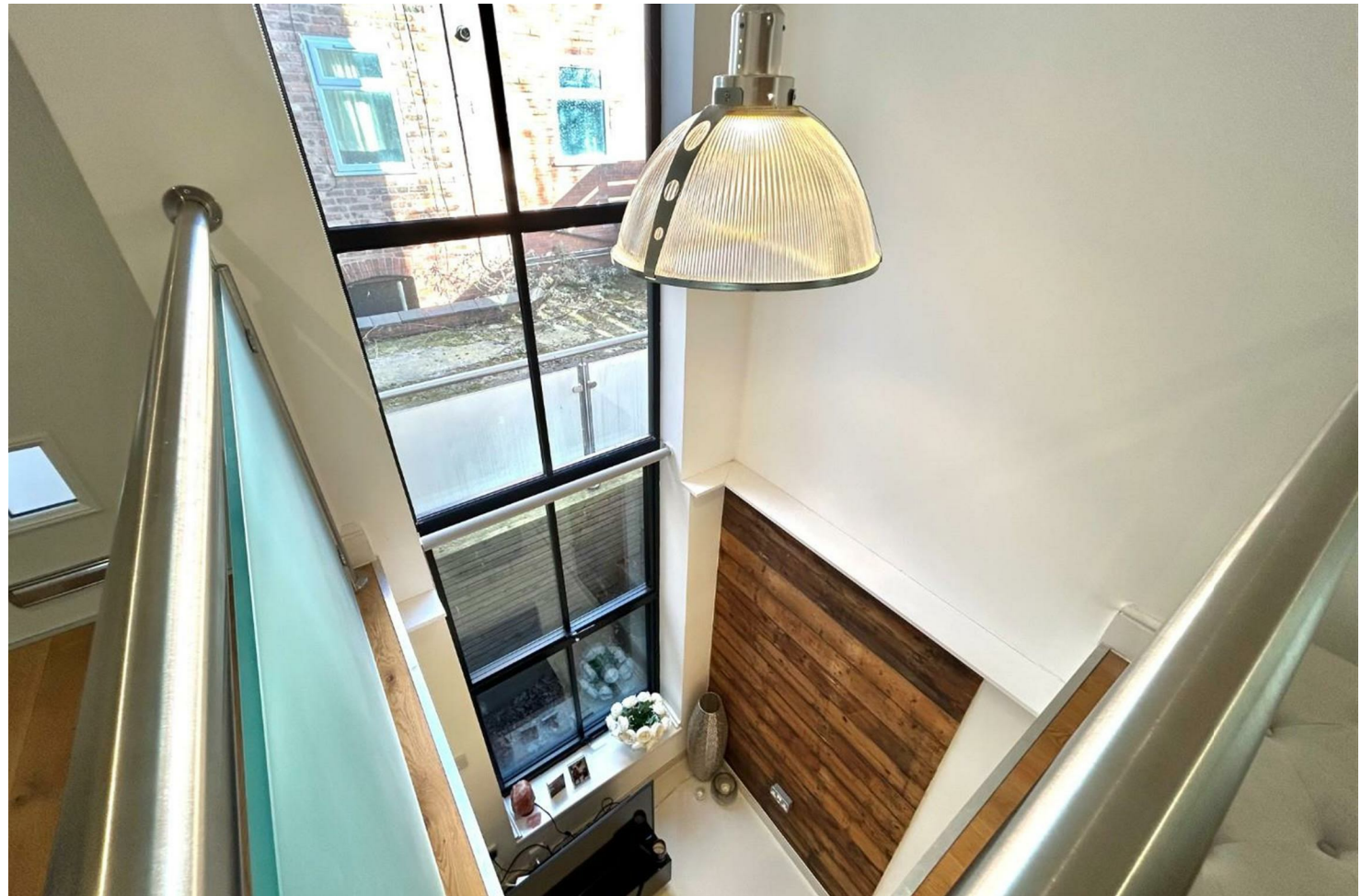
Postcode - M20 2NZ

EPC Rating - D

Floor Area - 601.00 sq ft

Local Authority - Manchester City Council

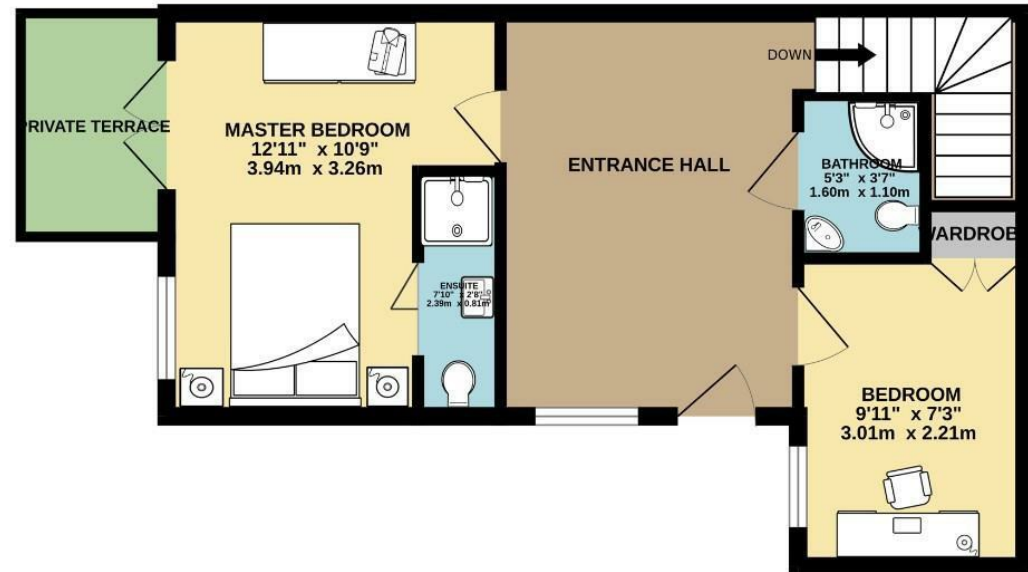
Council Tax - A



LOWER GROUND FLOOR
211 sq.ft. (19.6 sq.m.) approx.



GROUND FLOOR
391 sq.ft. (36.3 sq.m.) approx.



TOTAL FLOOR AREA : 601 sq.ft. (55.9 sq.m.) approx.
Measurements are approximate. Not to scale. Illustrative purposes only
Made with Metropix ©2025



These particulars are believed to be accurate but they are not guaranteed and do not form a contract. Neither Jordan Fishwick nor the vendor or lessor accept any responsibility in respect of these particulars, which are not intended to be statements or representations of fact and any intending purchaser or lessee must satisfy himself by inspection or otherwise as to the correctness of each of the statements contained in these particulars. Any floorplans on this brochure are for illustrative purposes only and are not necessarily to scale.

Offices also at: Wilmslow, Macclesfield, Hale, Sale, Chorlton, Glossop, Manchester & Salford

757-759 Wilmslow Road, Didsbury Village, Manchester

0161 445 4480

didsbury@jordanfishwick.co.uk
www.jordanfishwick.co.uk